

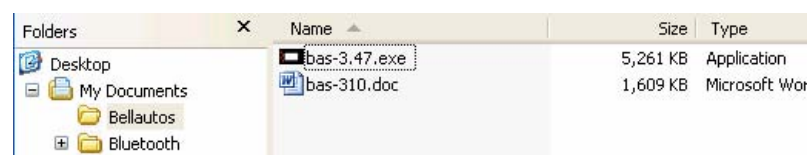


BAS Remap Interface PC Installation



At this point you must NOT have the BAS tool connected to your pc.

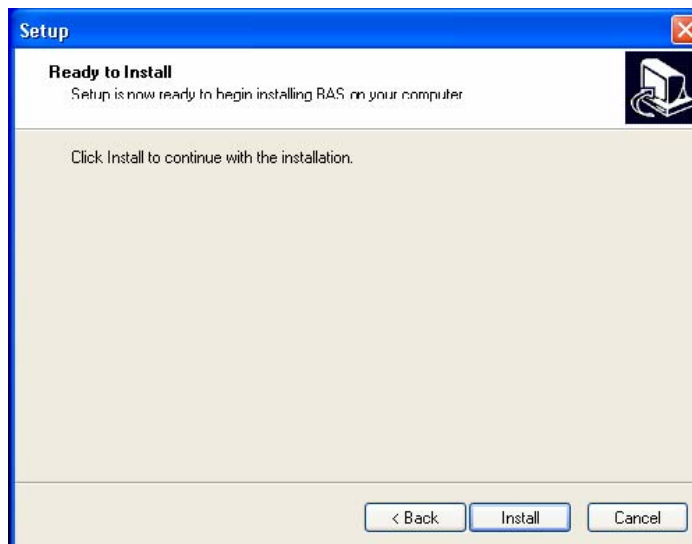
Locate the saved file and then Double click on '[BAS-3.66.exe](#)' to start the software install.



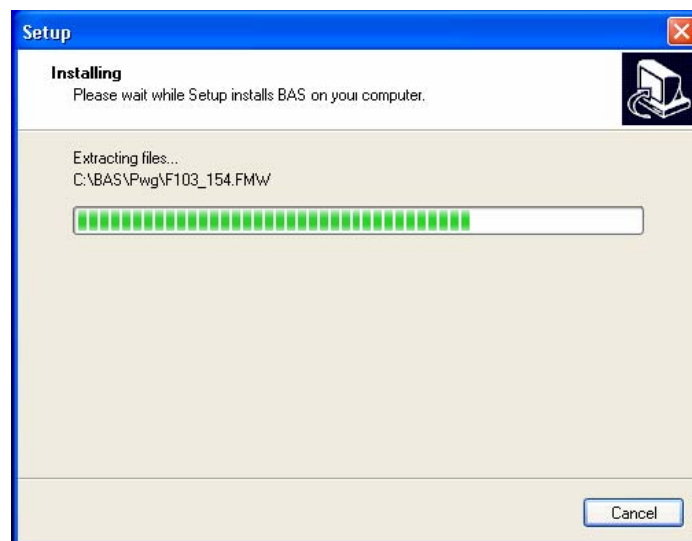
Click on the 'next' button to continue



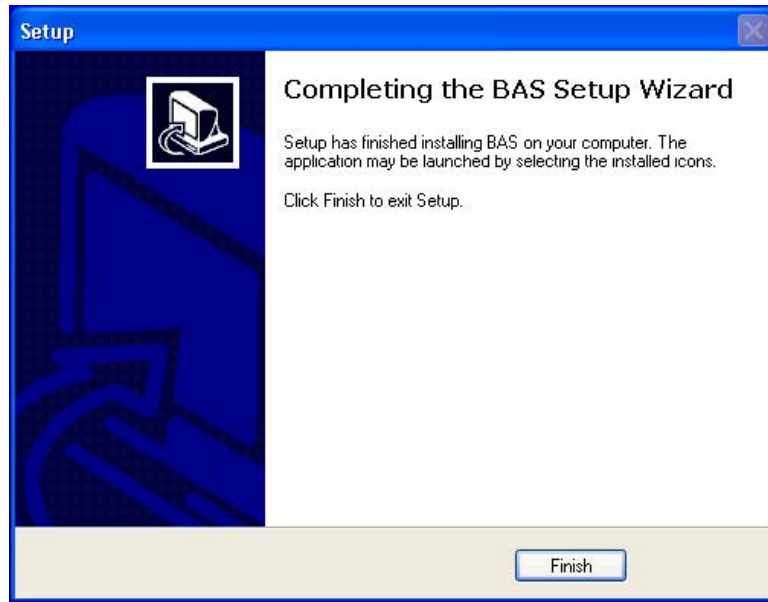
Click on **'install'** to continue



This screen will show the installation progressing.



Once the software has installed click on **'finish'** to complete install



Time to connect the BAS interface tool to your pc

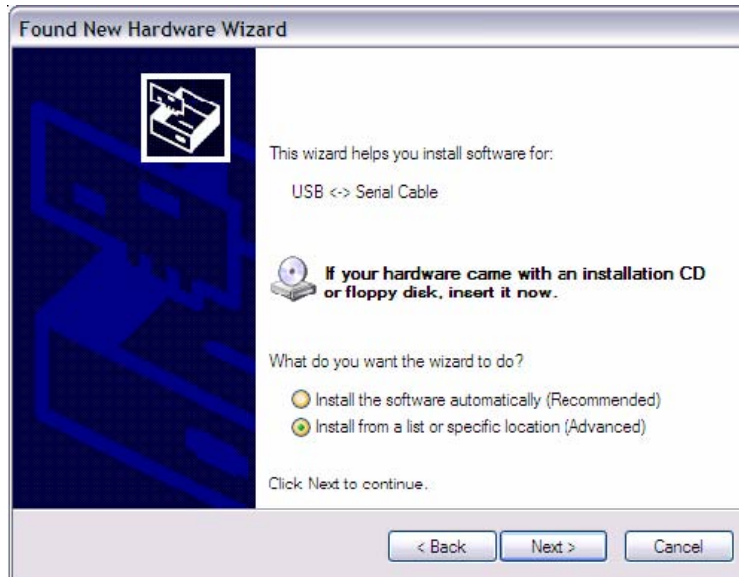
Connect your USB **BAS** interface to the PC with the USB cable provided, You should in most cases be prompted by the Windows Wizard for the driver, it can be found at **C:\BAS**



Once Connected you will be presented with the following screen, choose '**No, not this time**' then click the '**next**' button.



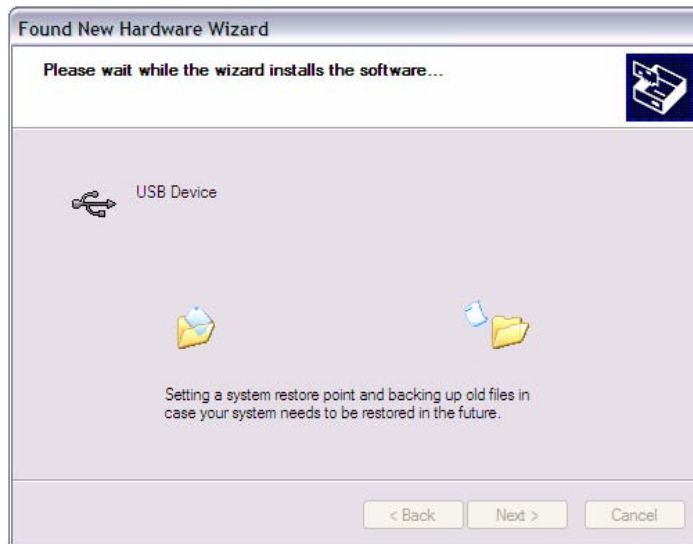
Choose install from **'specific location (Advanced)'** then click next



Navigate to **'C:\BAS'** and click **'OK'**



Now click the **'Next'** button.

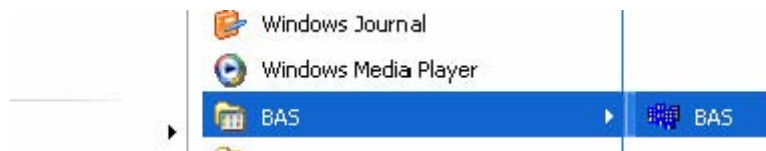


Then click Finish

To open the application double click the icon on the desktop or navigate via the start menu to the BAS menu.



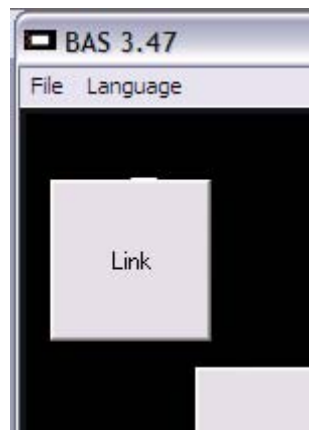
An icon will have been installed on the desk top



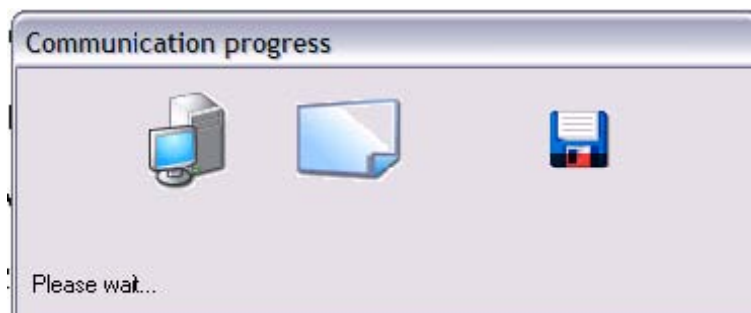
The following screen appears



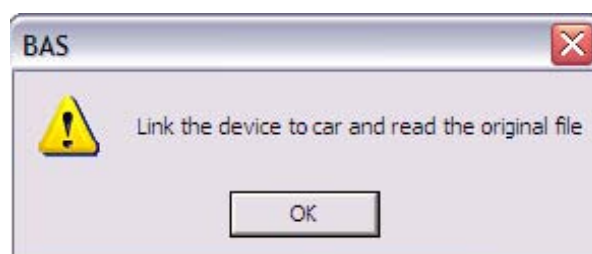
Once the interface is connected to the pc you can then click once on the Link button to connect the tool to the software.



You then should see this window



Followed by this information pop up
NOTE if you have already connected the tool and read the ECU of the car you will not see this screen.



This screen then shows the details relevant to the BAS interface.



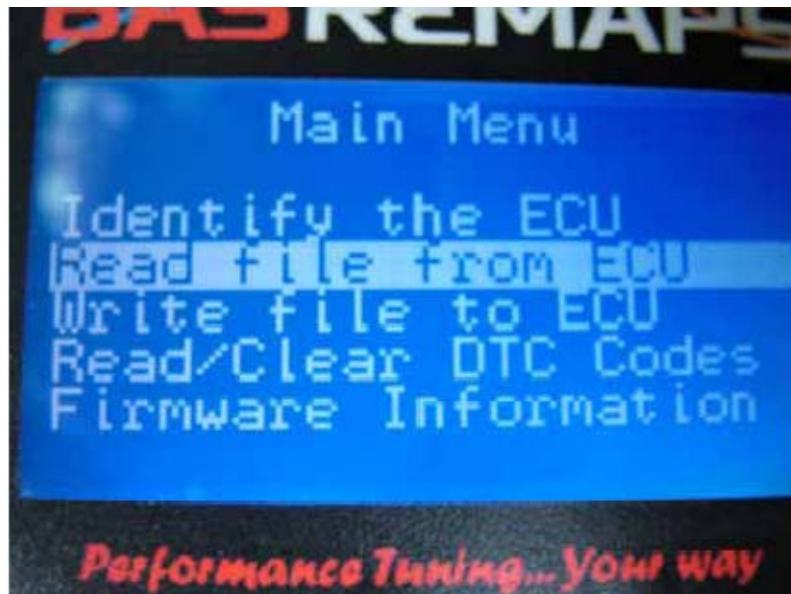
If you were presented with the previous info screen asking you to link to car and read ori then disconnect the B-A-S interface from the PC and connect to the ODB diagnostic port on the car.

D3 & RRS OBD port is located here in the foot well.



Note: when connecting to the car you need to connect with the key out and follow the onscreen prompts,
Please read the back of the interface unit and follow the instruction to make sure all accessories are turned of i.e. Radio, Aircon, Heated seats etc.

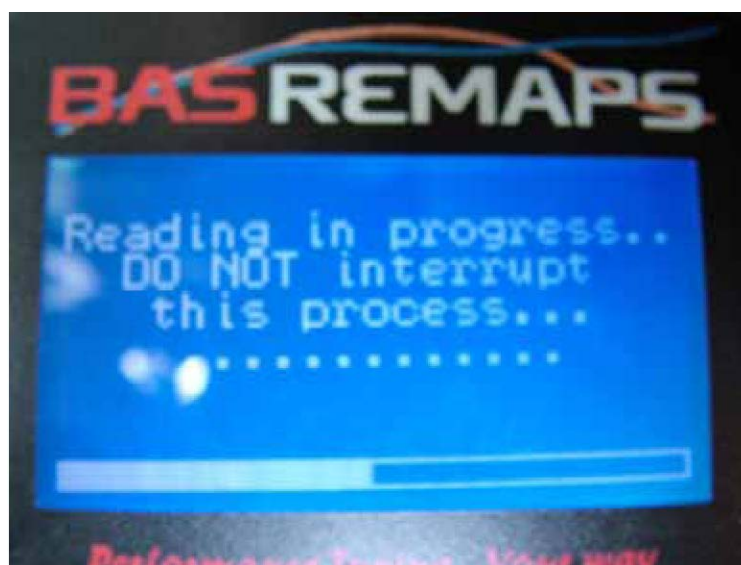
Using the B-A-S interface up and down arrows select, 'Read file from ECU'



Once selected you can start the process by pressing 'Y' button.



Follow the on screen prompts



Once reading **DO NOT DISCONNECT** or press any buttons on the BAS interface.

Note on some models of car you may see some warnings or errors on the dash while communication is in progress, this is normal they will be gone after the BAS tool is removed.



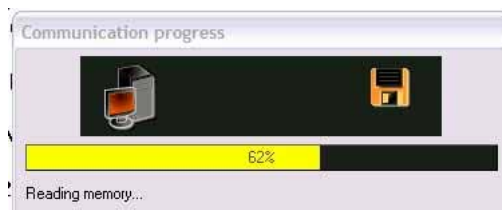
Once reading is complete disconnect from the car.

Re-connect the B-A-S interface with your PC to download the original file.

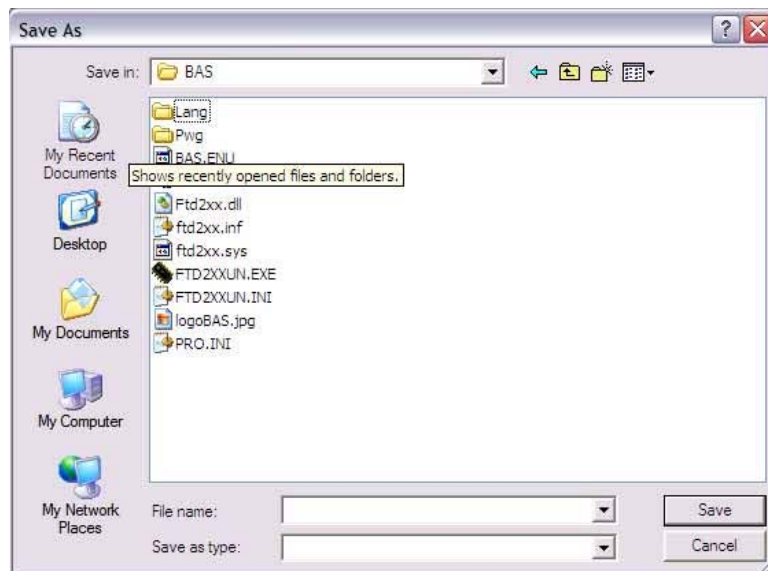


You should now find once you run the BAS icon and press the **'Link'** button that all the buttons in the software are now enabled

Click on the **'Read ORI'** button to download the original mapping to you PC



When presented with this windows select location where you want to save the file



Making sure that you use the following naming convention
E.G. Defender-110-Puma-Yourname-**Std**.BAS.dat

Email/Upload me the file for tuning and modification making sure you tell me the full cars details and intended use.

Email address bellautos@hotmail.com

Once the file is returned from BAS Upload the tuned file that is sent back to the B-A-S interface with the PC's software by using the '**Upload MOD**' button.

Note the file name has changed Defender-110-Puma-Yourname-**TUNED**.BAS.dat

Now the B A S interface will have 2 files inside it, the STD/Original & TUNED.
To complete the remap, Connect the BAS tool back to your car and program modified tuned file by selecting from the menu '**Write file to ECU**' and following once again the on screen instructions.